



Take a look at your SRC candidates

How to vote for an SRC which represents you

This year there will be two days of voting. If a 25 percent poll is not reached, then voting will continue for a third and if necessary a fourth day.

Dates

Tuesday 22 and Wednesday 23 August

Who can vote?

All full time students can vote as long as they are not registered for Masters or PHD degrees.

Students must produce a valid student card as means of

identification.

Where to vote?

Students can vote either at roving ballots or at fixed ballots. The roving ballots, which will be all around campus, will be staffed by people approved by the electoral officer. At the roving ballots students will be required to fill in the back of the card.

How to vote

Each student has a minimum of four votes and a maximum

of seven votes. Vote on a computer card at the polling station. The card must be filled in in pencil. Posters will be put up around campus explaining how to fill in a card.

Venues and times

● Arts, Architecture, Science and first year Medical students Senate House Concourse 8am - 7pm.

● Dentistry: Common room Dental Hospital 8am - 2pm.

● Engineering: Chamber of

Mines Building Faculty Of 8am - 4:45 pm.

● Medicine: Foyer Medical School 8am - 4:45 pm.

● Law, Commerce Education: Barclays Building Foyer 8am - 4:45 pm.

After 4:45 pm all polls move to Senate House.

Any student who is unsure about voting procedures see Peta Setvens, the electoral officer Room 3018 Senate House.



Lael Bet'lehem The In Thing

"How can we sleep when our beds are burning?"

In London they're rocking for the release of Mandela and in Washington they're calling for negotiations. In Harare they're singing for Human Rights and in Lusaka they're writing constitutional proposals. At Wits we're discussing non-racialism and debating the tri-cameral elections. And all over South Africa the future is being discussed and shaped.

Whether it's ending Group Areas, opening hospitals, sorting out the economy or improving education, students need to be informed and involved.

I believe that the SRC needs to throw its weight behind the efforts to build a democratic university in a just society.

As students we can get involved in directing and changing our society. The SRC must provide practical and constructive ways for students to do this. We must be able to experience the townships through social history tours and to help the community through practical work in the squatter camps and rural areas. We can support trade unions on and off campus and join tutoring programmes.

But as students we need control of our affairs in the same way as South Africans need democracy. If the government won't lift their restrictions of certain students and campus organisations then we must protest. And if Yale Rd isn't closed soon we must organise a sit-in on the tar!

Student unity needs to be used to make our university suit the needs of South African students and their communities. We must campaign for student rights and human rights. It's our campus and it's our country.

Record:
1985
Matric King David
1986
AFS
1987
BA1
Step tutor
Economic Research Committee
1988
BA11
Industrial Sociology II class rep
Economic Research Committee co-ordinator
1989
BA111
Industrial Sociology III class rep
Reader for blind students
Labour Committee co-ordinator

Endorsements:
STEP
Leora Rajak, SCAG
NEHAWU (Wits)
SAUJS



Claudia Braude Unity In Diversity

Why does the law syllabus not provide students with scientific insight?

Do our degrees, as well as careers and counselling, prepare us for informed choice of careers?

Does knowledge involve ethical responsibility? Is there a method in departmental madness and subsequent syllabi?

Does Senate take student needs seriously?

Questions like these should affect all in the pursuit of education --- a process all students have in common, on a campus of otherwise great diversity.

I believe people on the SRC must reflect this diversity of student interests and needs. Diversity is positive and beneficial. Recent events on campus have shown diversity can no longer be concealed in the name of a false student unity which is potentially explosive and open to external meddling in the form of state repression.

SRC needs structures which recognise this diversity, and provide a positive forum for the healthy expression of varying positions and opinions.

Elect me to the SRC and I shall take up the portfolio of ACADEMIC FREEDOM. I shall establish an Academic Freedom Committee, concerned with the pressing issues facing students of the 90's. This committee will look at the practical implications of academic freedom.

These include:

* the role of the university in changing SA

* Wits's responsibility to the economy (Why military research, for instance?), the community and the environment.

* freedom of speech in our turbulent society

* position of students on relation to these issues

I shall organise interdisciplinary workshops, debates and discussions so as to maintain a constant and dynamic process of consultation, involving students, academics, administration and off-campus organisations.

Record:
1985:
Prefect Yeshiva College
Matriculated
1986-7:
BA 1
1988:
BA 11
member of SAUJS
Musoc
Scag
1989:
BA 111
SAUJS

Endorsements:
Leora Rajak
Jordan Beagle
Science SRC Rep
Sarah Raisin
Law SRC Rep



Rolf Dauskardt Post graduate

Higher Degree student at Wits contribute both to the overall student community and importantly in the area of research. Due to the specific nature of the Post-Graduate experience, as a student and integral member of the broader academic community, a set of unique needs and demands arise.

The Post-Graduate Association (PGA) has championed the needs of Higher Degree students for several years and is currently operating two major projects :

1) The thesis supervisor stands as a sensitive link between the Higher Degree student and an array of university committees which monitor the content and progress of research. There is frequently a lack of clarity around these relationships, sometimes resulting in a negative experience of supervision, or worse! The PGA is working toward greater clarity and strong representation for students in this arena.

2) Research relevance within the context of a changing society has become a concern for most Post-Graduates. Without compromising academic rigour, it is possible and vital that we recognise the contributions that can be made through our research. Here, the PGA is working toward improved two-way links between the 'community', community based organisations and Post-Graduates concerned for the future of South Africa.

Beside these core projects, I believe that there are several other areas where Higher Degree student representation is required, including: bursary commitments, library facilities, computer use, disciplinary isolation and the inevitable parking.

I hold that as a Post-Graduate Representative on the SRC and the Secretary of the PGA I will be in a unique position to consolidate Higher Degree student needs through both forums.

Endorsements:

Em Beale, PGA Chairperson
1989
Roddy Payne, SRC Treasurer
and PGA Representative 1988
Etienne Marais, PGA
Chairperson 1988
Harry Dugmore, PGA
Chairperson 1987

conscience. These two events provided the conviction for which I involve myself in environmental politics. Were I to be involved in any formal structure on campus I would put as a priority the incorporation of "green" issues into every possible aspect of campus life.

More specifically, the introduction of an education programme for and by students, which focuses on topical environmental issues. I'm also particularly motivated into moving students to action, rather than mere words.

Endorsements:

Wits Exploration and Expedition Society
Biological Society
Earthlife Africa Johannesburg
Society Against Nuclear Energy (SANE)
Air Pollution Appeal Committee (APAC)
Jordan Beagle
Bettina von Lieres



David Jammy About Time

I spent my time on the SRC taking student representation seriously. I have:

- * Co-ordinated the biggest Orientation Week yet seen at Wits.

- * Worked on the Student Discount Booklet, the Harare Concert, the Yale Road Campaign.

- * Worked in Projects Committee providing information for a changing South Africa.

- * And much, much more.

That was in the 80's. But what about the 90's?

South Africa is changing and it's about time. Namibian independence is on our doorstep. Lusaka's overtaking Plett as a fashionable holiday spot, and Mandela is household name. Apartheid is being purged from schools, hospitals and sports fields.

At Wits we know it's time for apartheid to go. The question remains of how to ensure a valid contribution to a future South Africa.

Some answers lie in:

Building Non-Racialism and Student Unity

- In the 80's, the face of Wits changed completely. The student population grew by 43%, the black student population by '85 2%.

- Building non-racialism means more than sharing classrooms and canteens. A 90's SRC will need to bring students together in a constructive way.

Building Student Participation

- We know that there aren't easy answers to South Africa's problems. Our campus reflects this. A 90's SRC must create the forums to thrash out the real questions of the day, such as:

- * The question of negotiations

- * What a future constitution will look like

We as students need to add our weight to the call by democratic South Africans for:

- Releasing Mandela and others.

- Lifting the emergency.

- Unbanning the ANC.

The possibilities of an apartheid-free society are real, and it's about time. Our role as students has never been so important.

It's about time for About Time!

Record:

1985

Headprefect Greenside High

1986

Legal BA1

SAUJS

1987

Politics II Class Rep

Projects Committee

SAUJS

1988/9

Politics III Class Rep

SRC: Projects Vice-chair &

Orientation Week Committee

Chair

SAUJS



Ian Kaplan U2 Live

Student representation means student power. Wits University has a large and vibrant community, with diverse interests and opinions. An effective and responsible SRC is vital to a community such as ours.

I believe that my experience in representative structures affords me the necessary ability to provide responsible student leadership.

In order to provide effective representation, it is necessary that good communication exists between student leadership and the student body.

I am determined to:

- * promote regular contact between the SRC and various campus constituencies; all faculty councils, societies, committees, clubs and residences, must play an integral role in the student representative process.

- * promote dedicated efforts to address all student gripes.

- * promote the maintenance and expansion of services and benefits currently offered to students.

- * promote efforts to better campus unity and university spirit.

- * promote the placing of more emphasis, on the role of the residence student in the university community, and any attempt made to counter and solve problems particular to residence students, such as - food issues, parking, security, res fees.

- * promote an understanding of, and actively campaign against injustices inherent in our society.

I am sincerely committed to effective student representation, and hope that my commitment can benefit our student community.

In short, I stand for responsible representation, increased awareness and a dynamic vibe on campus.

Record:

1986

B Com 1

1987

B Com 11

Mens Res House Committee

1988

B Com 1V

Mens Res House Committee

All-Residence Council Executive

Endorsement:

Jacques du Preez - Commerce Students Council 1988/89.



David Kimber The In Thing

The two biggest problems facing black and white students at Wits are that we don't communicate effectively and we find it difficult to make informed decisions about what's going on in our country.

I think students want to break down apartheid barriers, but restrictions on the press and the state of emergency make it difficult to tackle the political issues of the day.

The IN thing is to be in touch with each other's fears and hopes for the future - we need to be informed!

Through working in the SRC Resource Centre, and as media officer on this SRC, I have developed skills in the field of communication and information.

The SRC, as a representative body, needs to be in touch with students.

Electing me onto the SRC will ensure that your views become campus news!

On the SRC I will:

- 1) Institute a letters column in the SRC News where you can demand information and highlight your concerns.

- 2) Canvas opinions on issues such as the Group Areas Act and conscription, and then publish it on campus.

- 3) Inform campus on faculty problems so they become campus concerns - leading to campus solutions.

- 4) Finally, lets not leave politics to the politicians. If we want to talk to the ANC lets talk to them! I will ensure the SRC organises a telephone link-up between the Great Hall and Lusaka.

Lets keep in touch and IN formed - it's the IN thing !

Record:

1983:
Matriculated Edenglen High
1984-85:
Army
1986:
BA I
1986-7:
Projects Comm and
ECC member
ECC executive
One of the 143 conscripts who
refused to serve in the SADF
1988:

SRC media officer
SRC diary editor
1989:
BA III
Militarisation Action Comm
(MAC) Chairperson
SRC Resource Centre co-
ordinator

Endorsements:

Kath McKenzie - Wits Student
Editor
Alex Kuhn - Saspu President



Anton Roskam About Time

The time has come for an SRC that can face up to the challenges of the new decade. The university community and the SRC has to confront these challenges head on.

It's time for assertive representation

The SRC has won major gains representing students on structures like senate and council.

Res fees have been frozen, tuition fees can now be paid over a period and library services have been improved. This is just the beginning.

IT'S TIME FOR US TO WORK TOGETHER

The SRC's representation will only be effective with:

- * ongoing contact with student organisations.
- * strong links with reses and faculty councils.

We need to stand together to see the SRC into 1990's

IT'S TIME FOR POLITICAL RESPONSIBILITY

Wits has a tradition of opposing apartheid. It's time to take this further. We need to:

- * Discuss and build the university we wish to see in the future.
- * Transcend our different backgrounds in building a united non-racial community.

To do this we must do more than talk - we must act.

The SRC needs strong representatives committed to different aspects of student government. It's time for student leadership that is ready for the 1990's.

As Vice-President of the 1988/89 SRC I believe I have the experience in many fields of student government to lead the SRC into the 1990's.

Record:
1984-86:

Mens Res
1986:
Projects Comm
1987-89:
LLB
1987-88:
ERC Co-ordinator
1988:
SRC
1988-89:
SRC Vice-President
Academic Freedom Chair
Rep to Senate and Council
Rep to Nusas National Council and Congress
ASP Tutor
Endorsements:
Mike Gordon Rag Chair
1988-89
Rose Hunter SRC President
1987-88
B Von Lieres SRC President
1988-89

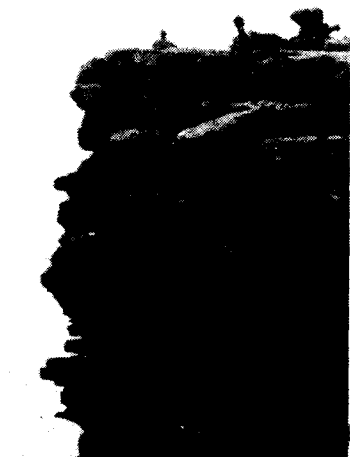
sticks. Upon assessing his time spent at university it seemed to follow much the same lines as his social life with less fermented malt consumed.

At this stage, the 'candidate nomination committee' began to examine the deeper, more secret parts of his life such as marks and were surprised to discover that there was a good chance, even if he was elected that he would no longer be allowed on varsity grounds. Looking at his interests he seemed to enjoy making fermented malt drinks and hammering little coloured balls around a green table with a stick.

The committee paused.
He was just what they needed.



Etienne Marais The Pinks



Paul Marais The Pinks



Chris Schirlinger Mechanical Shrubbery

Then came the day when Mechanical Shrubbery decided that there must be more to making money than just showing films and ripping off old ladies so they started to talk to people in power, organise 72 hour movie marathons and have Wednesday lunch meetings. It was soon after this spurt of wild energy that they decided to run for the SRC.

The first criteria they decided upon for their candidate was that he/she/it should be able to read. This soon proved to be a difficult task so they settled on a Bsc engineering student that had been a Wits Student reporter and was Public Relations officer for the mechanical shrubbery committee. He usually carried an Oxford dictionary with him and was rumoured to have learnt most of the words in the 'A' section.

This proved to be a good start so they began to delve into his social life which seemed to consist of frequenting places that served fermented malt and had green, felt tables where multi-coloured balls were



David Storey The Alternative Storey

My name is Dave Storey. I enjoy rugby and politics and I'm studying an LLB. As a professional I hope to stay and contribute towards building a non-racial democratic South Africa.

Conscription into an apartheid army stuffs this all up!

Apartheid means civil war and the SADF is fighting for apartheid.

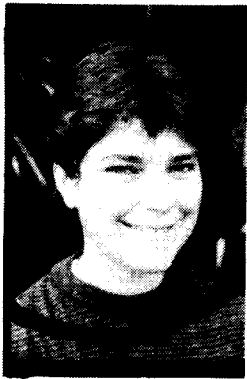
To do this it needs conscripts - that's where you and I fit in.

For all of us caught between actively supporting the system, jail or emigration - one thing is clear ...

WE NEED AN ALTERNATIVE!
I believe that National Service should be a part of every person's life. A time where he/she gives back to their country by using their energy and skills for the upliftment of all its people.

The sooner that we, as students directly affected, stand up and demand Alternative National Service - the sooner we can give this country real National Service.

HOW DOES THE "ALTERNATIVE STOREY" FIT



Sarah Davies Put Your Environment on the SRC

Here are a few areas I would like to look into while working on the SRC.

Nuclear research is carried out at Wits. The details and extent of this research is not open to students' questions nor to criticism from any quarter. I believe that students have a right to know the purpose of this research.

I would like to ensure that students' health is considered on campus;

- by investigating the irradiation of res and canteen food (nuclear waste is used to irradiate food, prolonging shelf life. No one knows what the other effects may be).

- Is there radiation in the wedge?

- Adequate and varied vegetarian food must be provided in reses and canteens. Wits campus is where we spend a large part of our lives. We need an environment conducive to study and socialising, free of pollution and major through roads. More indigenous trees on campus would also be welcome.

Representation is a two way process and your input is needed to make environmentalism effective.

Record:

1987:

BSC I

1988:

BSC II

Biosoc committee

Earthlife Africa - founding member

1989:

BSC III (Zoology)

SRC Projects Committee

Residence Awareness

Programme

Earthlife Africa

Endorsements:

Bettina von Lieres

Air Pollution Appeal

Earthlife Africa Johannesburg
Jordan Beagle (SRC Science
Rep)
Biological Society
Wits Exploration and
Expedition Society



Teresa Diruweit Put your Environment on the SRC

As an environmentalist and one of the founding members of Earthlife Africa, I would like to represent students' queries on a number of issues.

Among these is the issue of declaring Wits 100% ozone-friendly. This can be achieved through introducing CFC-free aerosols and freon-free fridges and discontinuing the use of polystyrene cups.

The issue of research at Wits desperately needs to be addressed. Last year students discovered that military research is being conducted on campus.

Personally I feel that this is unethical. Research using animals is standard practice at Wits; students are not informed about what exactly is going on. Students need representation on research committees and I feel confident of admirably representing you.

As an active environmentalist I am committed to representing an holistic view on our SRC, bringing environmental awareness to the same level as other issues.

Endorsements:

Wits Exploration and
Expedition Society
Biological Society

Earthlife Africa Johannesburg
Society Against Nuclear Energy
(SANE)

Air Pollution Appeal



Neil Ferguson Witsblitz

Apathetic Wits student: Oh look its two mindless shambling rads trying to politicise studentry.

Witsblitz: Wrong, in fact we're Neil Ferguson (Jennifer's brother) and Francois Venter (not Jen's bro) - in short Wits Blitz and we're here to do something about kulcha.

AWS: So what! Bugger off! Who cares?

WB: No, no really. We've got a plan. We're going to run for the SRC, revive culture comm, liaise with existing cultural organisations, co-ordinate the resources available to student culture and make these facilities more accessible to students.

AWS: What facilities?

WB: Venues such as Top of the Town, the Box Theatre, arcades and amphitheatres, organisations such as VOW, Free People's Comm, Musoc, Boxcom and Wits Surfing.

AWS: And what will all this achieve?

WB: By cutting down on duplication of effort, which has stifled student culture for so long, by reducing expenses through pooling resources, by co-ordinating planning and publicity, we'll increase the efficiency and reduce hassle resulting in MORE JORLS FOR LESS MONEY

AWS: How do you know you will succeed when others before you have failed?

WB: We've been involved in campus cultural activities (viz CU's) and we're committed to a vibrant and vital interchange of cultural media. We're going to keep in touch with student opinion through regular polls.

AWS: But where do I come in?

WB: We need your input and suggestions. You vote for us - we'll do it for you!

Member: - Executive Committee
VOW
- Musoc
- ECC
Senate House Bum

Endorsements:

Russel Barnes - VOW Station
Director '89/90

John Sham - Musoc Chairperson
'86-89

Box Com Chairperson '87-89

Chamber Choir '88-89

Sonia Zocchi - DSU Chairperson
'88-89



David Evans The Pinks

Primarily we are opposed to the Greens, but partial to the yellows - the radiation levels on campus are far too low - Wits has its own reactor, but it can't even produce levels of radiation that we even notice.

Independent research shows that nuclear radiation is not responsible for people staggering off from the Bozz on Friday afternoons. Reactivity has died down to such an extent that the natural evolutionary process of mutation is almost unknown these days - never mind the sheer boredom of 20 000 "normal" students.

Holes in the ozone layer, Are a good thing. The sun provides energy for the earth, the ozone layer is getting to us. With a depleted ozone layer who needs to go to Plett to tan?

We stand for:

- Trees off campus
- Car parking on the library lawn

- Further of West Campus

- Slag the lab bunnies!

- And remember "Up with capitalism"

- Down with the underdog

- Down with live earth groupies

- Down with oxygen thieves introduce pigeon pies



Debbie Hellman Remember and Give

As a full-time student at Wits I feel that RAG is an important aspect of student life. RAG - remember and give speaks for itself and how I feel as a representative of RAG.

I believe that RAG is an important channel which understands the basic needs of the students. RAG highlights this year have included the successful "Wits Wits" selling, floatbuilding was noted as 'Rave of the decade' and the unforgettable Rag Ball. I feel that as a sub-committee of the SRC there should be more integration between the various sub-committees, so that ideas can be shared and exchanged.

We are the "Comm that did it right" in 1989, and hopefully the standard can only soar higher in its involvement as an integral part of Wits. RAG has put a smile of gratitude on the faces of many people, our beneficiaries include the Alexandra Health Clinic as well as the Twilight Children and 702 Crisis Centre, to name a few.

I believe I can fulfill the task as RAG representative on the SRC because I am open to new ideas, reliable, hardworking and always striving to reach new and exciting goals.

I wish all the candidates, both faculty and general the best of luck throughout the running of the SRC elections.

Endorsed by:
J J Van Wyk: SRC VOW
Station Director



Steven Higgins The Pinks



Nikki Howard About Time

It's about my past, the present and our future. It's about a changing society and a changing university. It's about student government in the 1990's. It's time for high-powered representation.

I've spent two years on the SRC working in areas ranging from student services to anti-apartheid campaigns. I have learnt from mistakes and more importantly from victories. I've learnt that it's not good enough to canvass student opinion if this falls on deaf ears. It's not good enough to sit on committees if our representation is dismissed as student idealism.

Until we build real student power, admin will continue to make decisions without consulting us -

- * The bridge across the highway looks spectacular but R2 million could've been spent on new residences or high-rise parking buildings.
- * 18 000 students battle with the gvro-vend system daily -

were we consulted? No!

I aim to make student power a reality at Wits. The SRC will know what students need - on campus, in their education and on political issues. I am determined to ensure that students and student structures are central in defining the SRC's programme, it's priorities and it's representation.

To transform student power into student gains I will campaign for:

- * full voting rights on Senate and Council
- * reportbacks from admin through SRC News
- * real consultation on all issues affecting us.

Gone will be the days when students have to sit back and accept uncompromising bureaucracy, boring lecturers, and rocketing canteen prices - it's about time we took control - although this might seem ambitious - experience tells me it's possible.

Let the 1990's see in the era of real student power - it's ABOUT TIME!

Record: -

- 1984: Woodmead Council President
- 1985: Exchange student
- 1986: BA1 Projects Committee
- 1987/8: SRC-Student Services Vice Projects Officer
- 1988/9: SRC-Projects Officer
- Rep: Nusas National Council



Jennifer Hunter Part time

As a part-time student at Wits I am aware of the many difficulties that part-time students experience.

Most part-time students have lectures in the late afternoon when both students and lecturers are tired. Lecturers tend to regard part-time students as less important than full-time students as they see much less of us, when in fact, we need more assistance!

Time is a major factor for all part-time students who work, and therefore the planning of examinations, formal and informal contact time and the opening hours of the library need careful consideration.

If it is said that students are treated as the least important people on campus, this is much more time for part-time students who pay high fees and derive few benefits. I would like to actively promote the interests of part-time students and bring our problems to the university's attention.

Record:

- 1973 Matriculated
- 1974-6 BA Rhodes University
- 1978-9 LLB (Incomplete) UCT
- 1980 HDLIS UCT
- 1981-3 C0-ordinator NEUSA Teacher's Advice Bureau and NEUSA Executive Member
- 1984 Freelance Librarian
- 1985-9 C0-ordinator German Academic Exchange
- Enrichment Programme (Supplementary Tuition Programme
- 1987 Weekly Mail Fil Festival Committee
- 1987-9 Founder member of Film Resource Unit
- Langlaagte Deep Residents Committee'
- 1989 BA Honours Applied Linguistics Part-time
- Member of Progressive Teachers League



Gregory Jacobs Put your Environment on the SRC

In 1988, I was (I think) instrumental in starting a much needed environmental group. Also in 1988, a good year for me, I publicly refused to serve in the SADF for reasons of

Working in the Militarisation Action Committee (Mac), through the SRC I will :

- (a) Build the ANS forum with all university sectors
- (b) Organise "Know Your Rights" Seminars
- (c) Continue the work in the Conscripts Advice Bureau
- (d) Pressurise the university to:

- * Assert the need for alternatives on a faculty level eg. recent Law Faculty stand
- * Streamline student deferment procedures
- * End military research
- * Provide support for student objectors and call for the unbanning of the ECC.

Call me an idealist but I believe in the value and potential of responsible student government and I am prepared, with your support, to work hard for students, while providing the 'ALTERNATIVE STOREY.'

Record:

- 1985: Greenside High
- 1986: BComm (LG) 1
- 1987: BComm (LG) 2 Wits u20A Rugby
- 1988: BComm (LG) 3 u20A and Commerce Rugby Projects Committee
- 1989: LLB Law Rugby Projects Committee MAC

Endorsements:

- Dave Bruce Support Committee
- Dave Kimber Militarisation Action Committee
- Justin Justine Hawes- CSC Vice-President
- Tom Plewman - LSC



Lisa Tollman

The Wits students community requires a voice at all levels. The SRC should be a body which represents and promotes the interests of its constituency. As a member of the SRC, my primary concern would be to provide an effective, responsible and representative voice for students in all spheres of student life.

My three year involvement in Residence has provided me with the opportunity to actively participate in both student government and the representation of student views to the administration. The skills developed from these experiences will enable me to address student needs and interest effectively.

Moreover, I believe the residences to be a dynamic and increasingly significant constituency on campus. As such the continued co-operation of the SRC and residence committees is vital to establish a Wits vibe.

Education is the cornerstone of any university. Within our particular South African context, the SRC has a responsibility to involve itself in the process of learning - directly challenging the teaching practices of the university, and providing a forum for the exchange of ideas to encourage communication and build non-racialism. We should not ignore the realities of apartheid, but address them

We, the Wits student community, have power. With a representative voice, this power can be utilised effectively.

Record:

- 1985 Matric Durban Girls' High School
- 1986 Leadership Training Programme in Israel
- 1987 BA 1 Economic Research Committee Wits Karate Club
- 1988 BA 11 Vice-Chairperson Jubilee Hall House Committee
- 1989 BA 111 Chairperson All-Residence Council Chairperson Jubilee Hall House Committee Wits 2nd Tennis Team

Endorsements:

- Michael Gordon, 1988/89 Rag Chairperson
- Bettina Von Lieres, 1988/89 SRC Chairperson



**Paul van Zyl
The In Thing**

For some Wits students culture is something growing on their sandwiches. Others search in vain for culture in Anthro 1. The brave hearted have ventured to the Boz on Friday only to return empty handed.

We need to create a strong Wits culture.

Our campus is divided (Yale Road dissuades even the most intrepid bridge builder). A common culture will help cement us together. But what sort of culture? Verwoerd and Co. have ensured that our backgrounds are sufficiently diverse so that a common Wits culture is difficult to create or even imagine.

We need to forge non-racialism so we can dismantle apartheid from below.

Culture can play a vital role in this - there is nothing more unifying than a beer at a Free Mandela Concert or a discussion after some "relevant" theatre.

Campus needs more jorls - not for their own sake but rather to build a united Wits vibe. It is during these that we can get to know each other and reconcile our vastly different backgrounds.

Right now I am part of a team that is working on a Free Mandela Concert on campus. I want musicians and buskers on the Library Lawns. I want to revive the Box Theatre as an experimental drama venue. I want to work with BSIC in setting up a non-racial culture committee.

It is by bulding a non-racial culture on campus that we can overcome the divisions of apartheid and make Wits an Experience rather than an institution.

Record:
1987 :

- Projects Committee
- Sociol class rep
- 1989 : BA2
- Projects Committee
- Free People's Concert Committee

Endorsements :

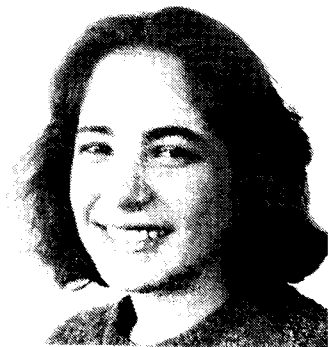
- Jordan Beagle - Free People's Concert Chair
- Mango Groove
- Bright Blue
- Drama Students Union
- Voice of Wits
- BSIC cultural desk
- South African Musicians Alliance
- John Sham - Musoc/Box Theatre Chair



**Francois Venter
Witsblitz**

Record:

- 1987: Matriculated
- 1988: SA Youth Exchange scholar
- 1989: BADA I Member DSU
- Education support project (Afrikaans Environmental Studies)
- Patron of Wits Theatre bar



**Natalie Zimmelman
Working With
Wits Women**

This campus is not geared towards meeting the needs of

a campus where concerns which affect half the student population are seen to be important and in need of urgent attention.

Admin's track record of making the lives of women students easier hardly inspires confidence. That's why we need representation on the SRC.

I would work for:

- * Easier access to contraception

- * Pregnancy tests - without raised eyebrows!

- * A sensitive gynaecologist at Campus Health

- * More information about abortion - although controversial, it is nevertheless a health issue for women.

- * Improving and publicising university channels dealing with sexual harassment. There have been rapes on our campus and many student women complain of sexual harassment by members of staff and fellow students.

- * Unity between black and white women. Apartheid has divided us, but I believe that as women students we do share common experiences and should work together towards a just and equal future for all people in South Africa.

- * Communication between women students and the SRC. I will take this seriously. For example, I hope to move into res next year so I can be more in touch with res women's issues. But for a start, please use the space below to tell me about the issues that concern you.

By doing the above I hope to fulfil my campaign promise of:
Working with Wits Women

Record:

1987

Provincial squash, netball and waterpolo

1988

BSc 1

Wits Women's Movement

1989

BSc 2

WWM

Orientation Week Committee

CBS Class rep

School of Biology rep

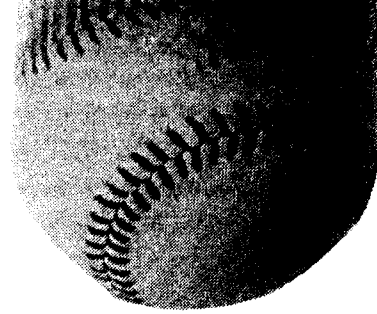
Endorsements:

- * Wits Women's Movement

- * Mel Holland SRC Women's Portfolio

- * Lisa Tollman All Res Council Chair

- * 97% of the CBS class



Catch the results on Thursday!

